

PCIEERD IMPACT ASSESSMENT

Updated as of 29 February 2024

Overall Strategies

Human Resource

- Development of core competencies in the conduct of impact assessment
- Provide training on impact assessment both for researchers and program/project managers through the following:
 - Establishment of Community of Practice (CoP)
 - Interchange of IA knowledge between third party experts and in-house employees
- Plantilla Positions for PCIEERD IA team

R&D Technologies

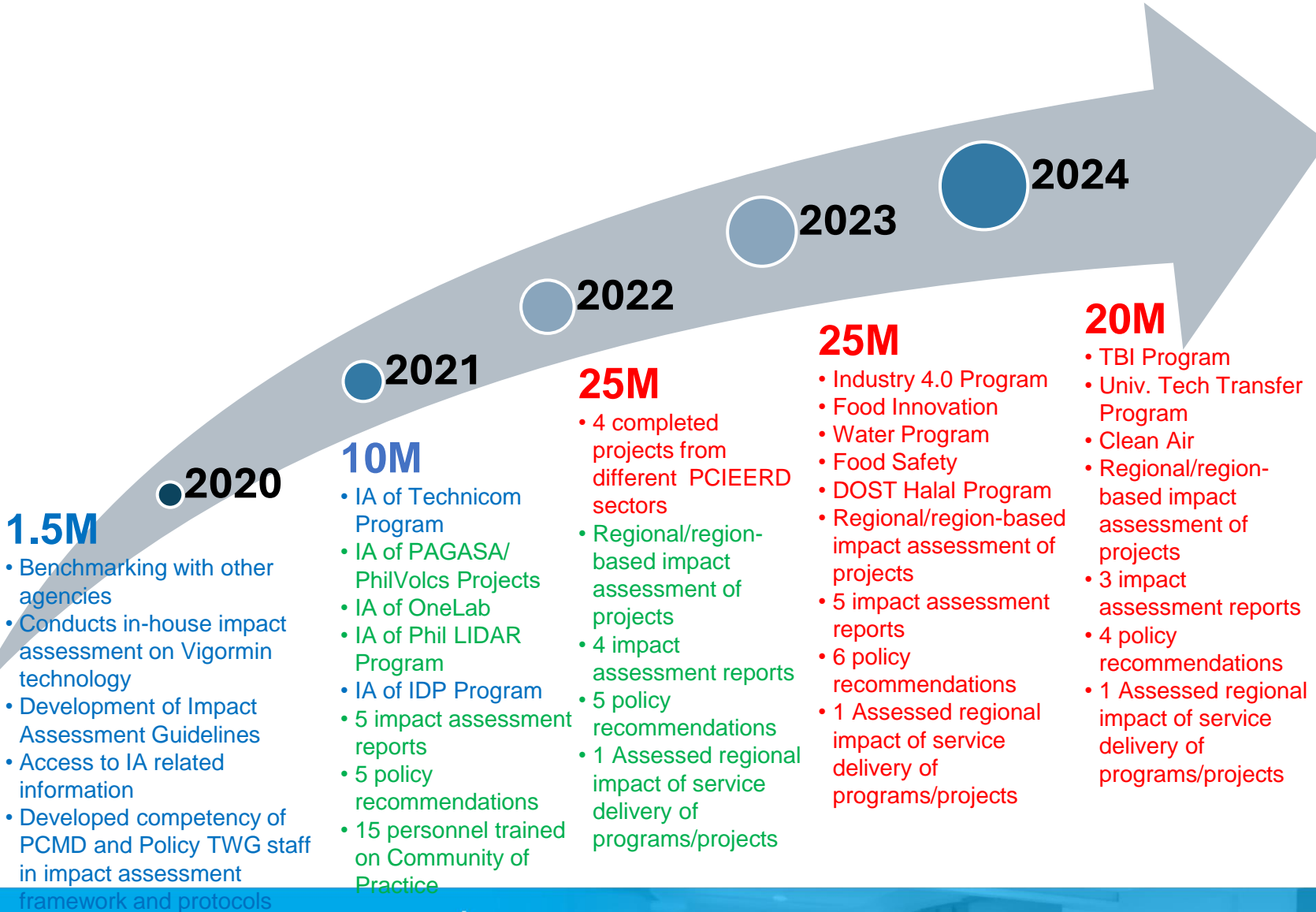
- expanded monitoring and evaluation process to cover beyond the 6Ps metric by including medium and long-term benefits.

Facilities / Services

- Provide researchers with impact assessment tools for completed projects
- Establishment of impact assessment team to facilitate IA implementation

S&T Policies

- Development of Impact Assessment guidelines, framework and protocols
- Updating/amendment of IA related guidelines
- Establishment of mechanism in improving the national development strategies and plans in the subsequent implementation of the projects and programs



Vision

To provide knowledge-based evidence on the continuous financial sustenance to R&D programs for sustainable development

Overall Outcomes

Human Resource

- Increased number of personnel trained in impact assessment
- Increased number of researchers, programs leaders trained in impact assessment
- Sustainable impact assessment unit of the Council

R&D Technologies

- Improved/expanded M&E process beyond 6Ps metric

Facilities / Services

- Established impact assessment tools
- Established IA team that can facilitate impact evaluation

S&T Policies

- Policy/Guidelines as a result of the assessment
- Improved mechanism in the implementation of subsequent programs and projects



PCIEERD IMPACT ASSESSMENT

Updated as of 29 February 2024

Overall Strategies

Human Resource

- Development of core competencies in the conduct of impact assessment
- Provide training on impact assessment both for researchers and program/project managers through the following:
 - Establishment of Community of Practice (CoP)
 - Interchange of IA knowledge between third party experts and in-house employees
- Plantilla Positions for PCIEERD IA team

R&D Technologies

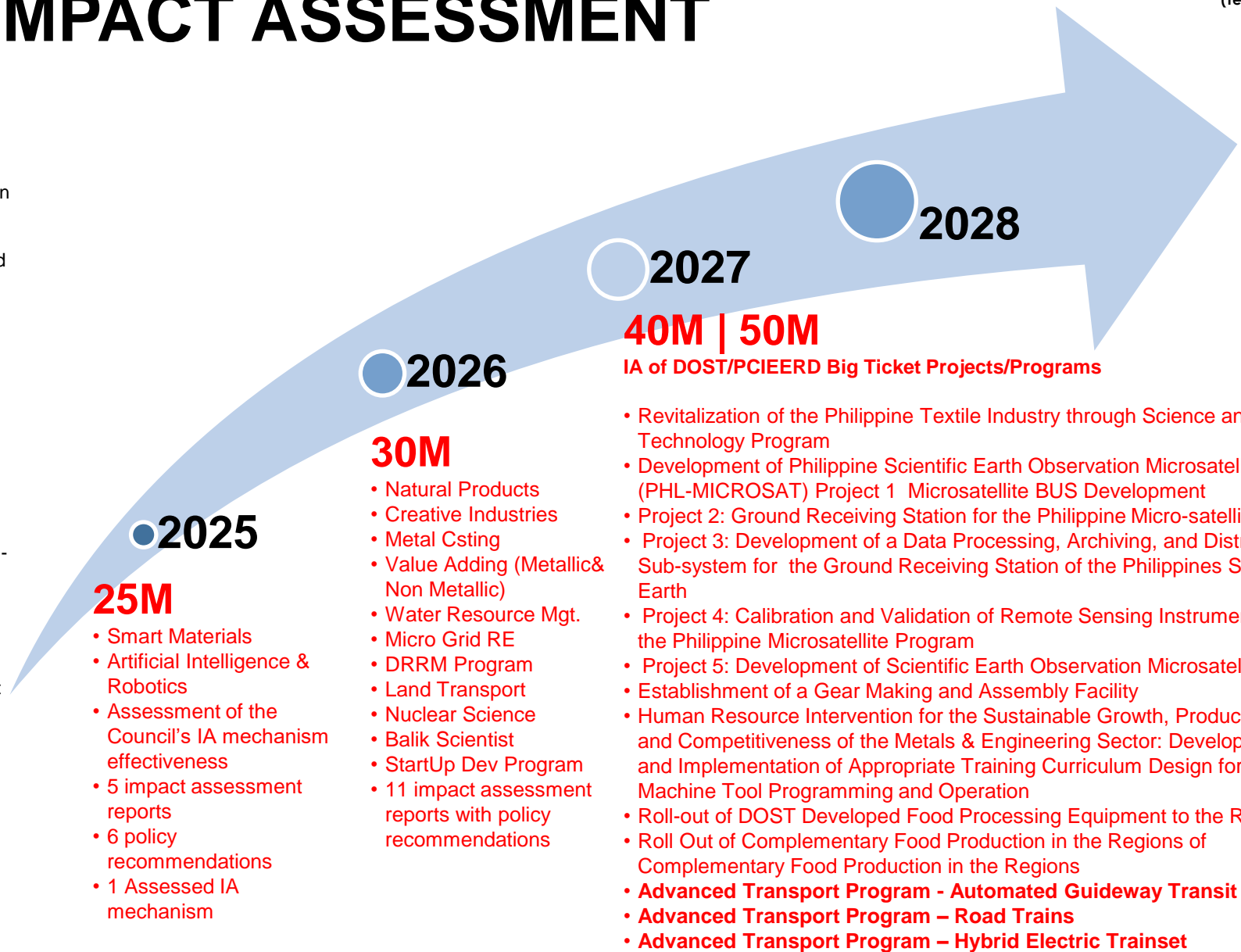
- expanded monitoring and evaluation process to cover beyond the 6Ps metric by including medium and long-term benefits.

Facilities / Services

- Provide researchers with impact assessment tools for completed projects
- Establishment of impact assessment team to facilitate IA implementation

S&T Policies

- Development of Impact Assessment guidelines, framework and protocols
- Updating/amendment of IA related guidelines
- Establishment of mechanism in improving the national development strategies and plans in the subsequent implementation of the projects and programs



Vision

To provide knowledge-based evidence on the continuous financial sustenance to R&D programs for sustainable development

Overall Outcomes

Human Resource

- Increased number of personnel trained in impact assessment
- Increased number of researchers, programs leaders trained in impact assessment
- Sustainable impact assessment unit of the Council

R&D Technologies

- Improved/expanded M&E process beyond 6Ps metric

Facilities / Services

- Established impact assessment tools
- Established IA team that can facilitate impact evaluation

S&T Policies

- Policy/Guidelines as a result of the assessment
- Improved mechanism in the implementation of subsequent programs and projects

